



Quantum 3: Dual Port Chassis

The Next Generation in Fleet Charging Solutions

Quantum 3 Advantages

- Seamless Control and Connectivity
 - Wireless cloud integration with ACTview & Battview
 - Wi-Fi connectivity enables remote management, real-time analytics, and issue alerts
 - Automated data uploads and command sending, all accessible anytime from any device
 - Continuous improvements via remote firmware and software updates
- Efficiency, Cost Savings, and Performance
 - Achieve peak efficiencies of over 96.4% and full-cycle efficiencies exceeding 96%, reducing power consumption and energy costs
 - Multi-voltage and multi-AH capabilities to meet charging needs of various fleet equipment and batteries (lithium-ion, VRLA, & flooded lead acid)
 - Compact design providing space-saving benefits while maintaining full power
 - Modular architecture ensures easy scalability and minimal downtime during maintenance





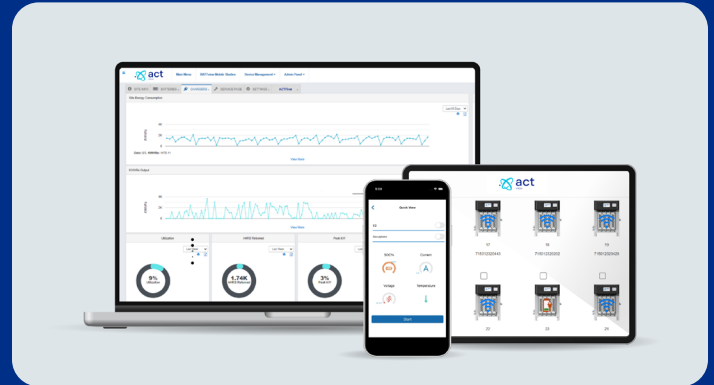
Quantum 3 Dual Port Chassis Specifications

Power Rating	24 - 36 kW
Utility Requirements	480VAC, 60Hz, 3-Phase, Delta Connected with Earth Ground
Full Load Amp Draw	16.5 - 33A
Peak Charge Efficiency *	96.4%
Total Charge Cycle Efficiency *	96%
Battery Voltage Range	24V - 120V
Max Output Current	150 - 300A x 2
Weight	97 - 126 lb. (fully loaded)
Dimensions	16 x 14 x 42 (in.)
USB Port	USB-C
Display	7" High-Resolution 1024 x 600
Operating Temperature	-20° C to 50° C

* Requires high-efficiency module

Certified: UL/cUL
Coming Soon: CE / RCM

Integrated Solution for Smart Battery Charging and Monitoring



ACTview Intelligent Fleet Analytics and Reporting

Manage your fleet seamlessly from anywhere with ACTview. Access real-time analytics and reports for Quantum and Battview assets. Seamlessly integrate new features and functionalities with minimal effort and zero downtime, all achieved through over-the-air updates.



Battview Smart Industrial Battery Monitoring

Remotely analyze fleet performance through advanced data analytics, battery utilization and battery performance data.